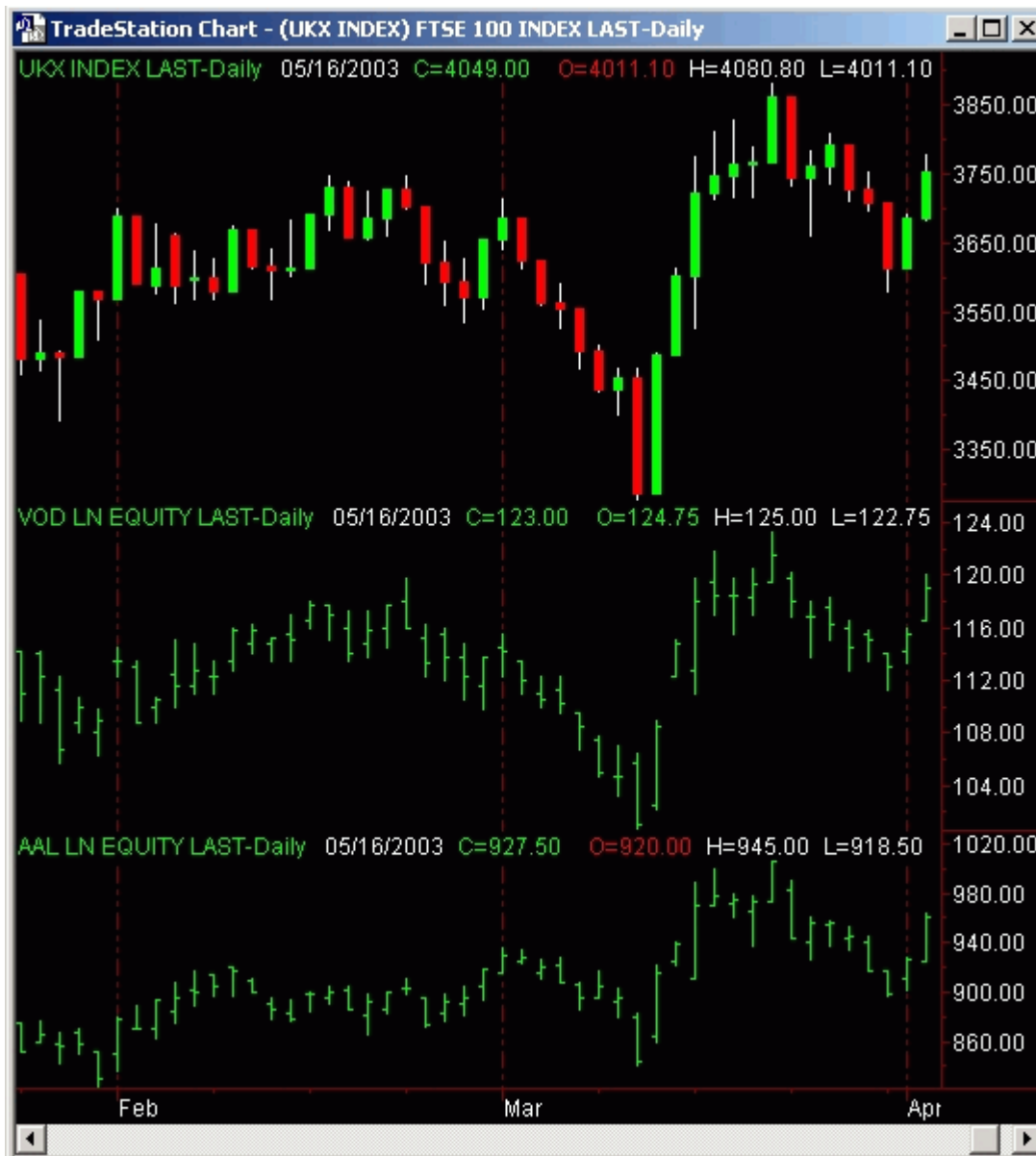


Creating a Multi-Security Chart in TradeStation 2000i

You can plot more than one security in the same chart window. Each additional security will plot underneath the other in a separate sub-graph, as shown below.



You will begin with a chart window that already has a security plotted (considered the base price data) then add a second security to the chart window without replacing the first symbol. To add additional securities to the chart (a maximum of 8 graphs can be visualised in an open chart window), use the **Insert - Symbol** menu sequence. In the **Show** section, select your data source: GlobalServer, GlobalServer Symbol List, 3rd Party Directory, or 3rd Party Directory Symbol List. In the **Symbol** section, type the ticker (or partial ticker) to display a list of securities matching your input. **Uncheck** the **Replace selected symbol** check box. **Click Plot**.

IMPORTANT: *You cannot combine a ticker using a tick-based data compression with any other type of data compression (e.g., you cannot plot one ticker as a 1-tick chart and the other as a 5-minute chart). Nor can you combine Point & Figure charts with other data compressions. Also, when receiving data on a delayed basis, you cannot combine ticker listed on exchanges that use different time delays.*