

How to install Adapta 2000i for Bloomberg



1. Adapta 2000i Installation

If you are installing Adapta 2000i **and TradeStation 2000i** or ProSuite 2000i for the first time, read the support document entitled *Install TradeStation 2000i for Bloomberg*.

If you are installing Adapta 2000i for the first time but have **previously installed TradeStation 2000i or ProSuite 2000i** (must be Service Pack 5 – version .0822 or higher) for an alternative data source, **read section 1 below**.

IMPORTANT: Running the SetUp Wizard will permanently delete all previously installed tickers and their associated price history in GlobalServer, and therefore, will not allow you to view charts created from that GlobalServer history (this does not apply to End-of-Day data stored in 3rd part directories such as CSI, CSV, Ascii, etc). We advise that you make a backup of your GlobalServer Portfolio and price history, workspaces, and universe.mdb file as a precaution.

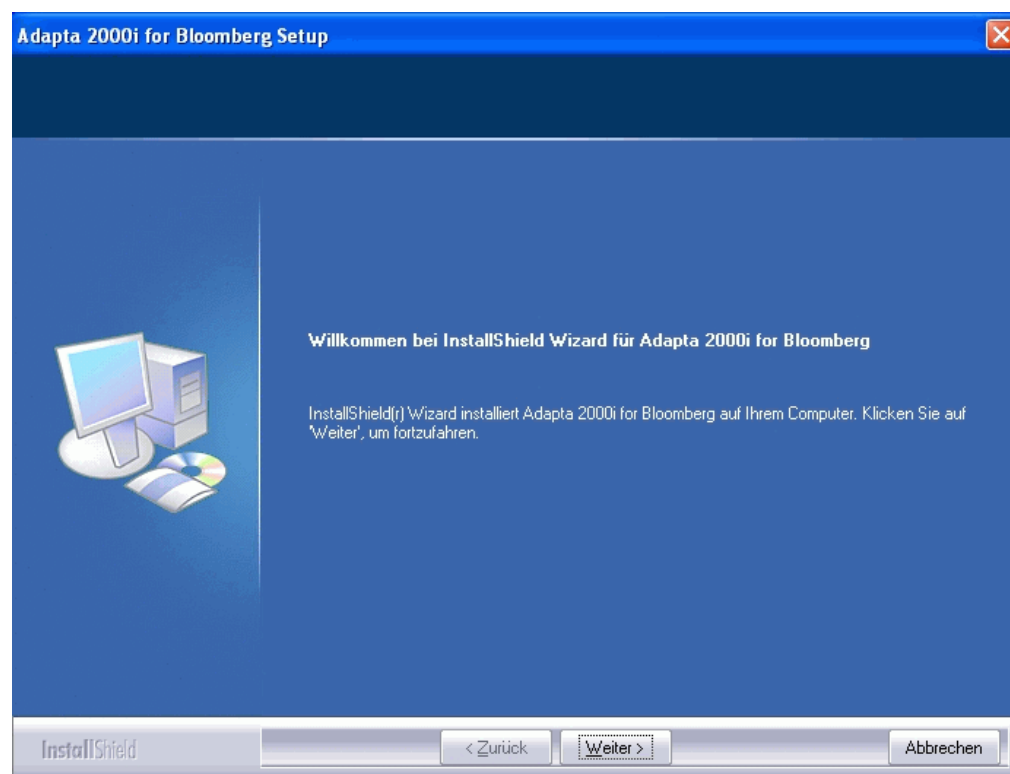
EXIT (Close) TradeStation 2000i and GlobalServer

If you received an Adapta 2000i CD, load it into a drive.

If you downloaded version 1.4 or greater from TradersWorld, locate the file named Ad2K_BB_1.4.x.x.exe (or greater).

From the CD , or if you downloaded, launch the executable file Ad2K_BB_1.x.x.x.exe.

1.1 The InstallShield Wizard will open.

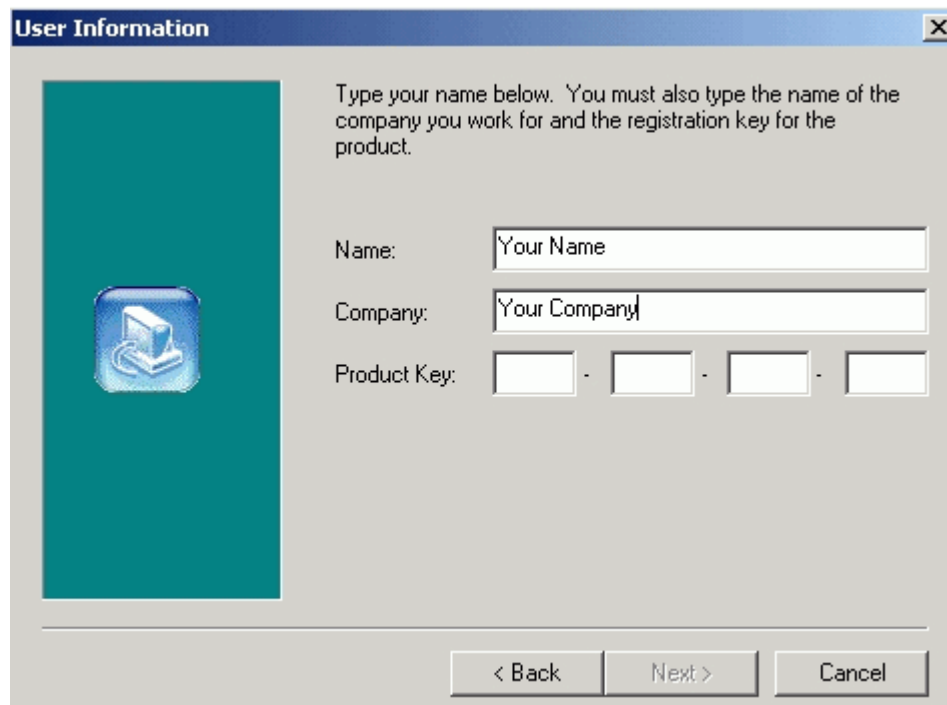


1.2 Click “Weiter” to continue...

How to install Adapta 2000i for Bloomberg

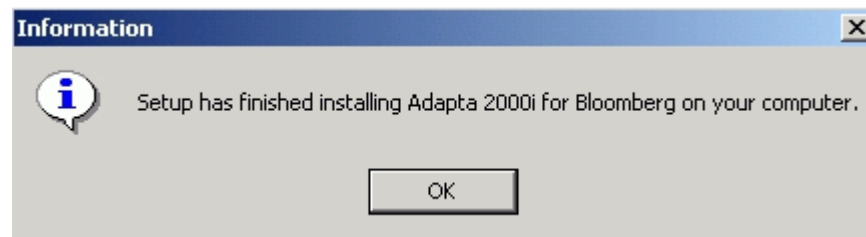


1.3 Click “Ja” if you agree to the terms of the license agreement...



1.4 You will have received a 16 digit license key from TradersWorld. **Enter** your personal and company details, followed by **the license key**. Remember, all keys use the numbers one “1” and zero “0” (**not** the letters “O” and “I”). **Click Next** to continue...

How to install Adapta 2000i for Bloomberg



1.5 When Setup has completed, **click OK**. You will be **returned to the desktop**.

Install Bloomberg Ticker Universe for GlobalServer

To install the custom ticker universe for Bloomberg, as provided by TradersWorld, proceed as follows.

1.6 Go to the following directory C:\Program Files\Omega Research\Universe.

1.7 Locate the file named **universe.mdb** and rename it to e.g., **olduniverse.mdb**

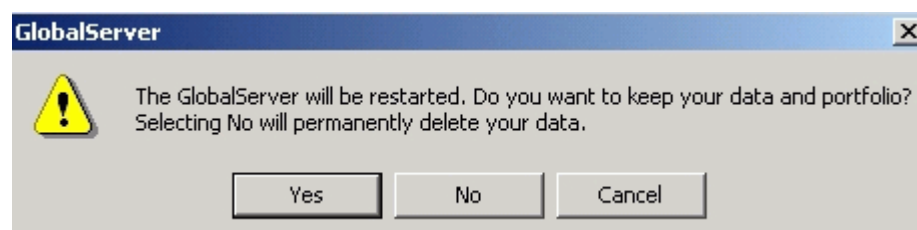
1.8 You will have received a compacted file from TradersWorld named **uniblp.zip**. Extract the contents of this file to the following directory C:\Program Files\Omega Research\Universe.

2. Running the GlobalServer SetUp Wizard

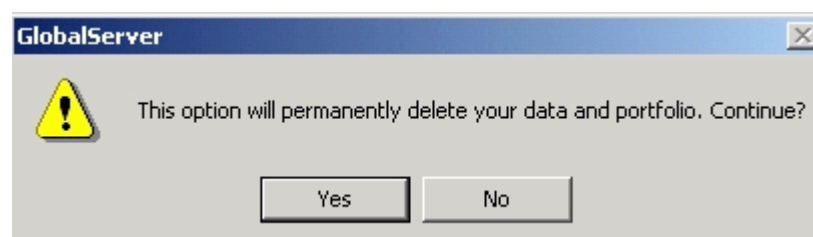
2.0 Launch GlobalServer... Start "Offline"

2.1 Adapta 2000i is designed to identify only Bloomberg tickers. The Setup Wizard will now remove all previously loaded tickers (and their associated data history). To remove all the tickers, click on **Tools/Run Setup Wizard**.

IMPORTANT: Running the SetUp Wizard will permanently delete all previously loaded tickers and their associated price history in GlobalServer, and, therefore, will not allow you to open charts created from that GlobalServer history (this does not apply to End-of-Day data stored in 3rd part directories such as CSI, CSV, Ascii, etc). We advise that you make a backup of your GlobalServer Portfolio and price history, workspaces, and universe.mdb file as a precaution.

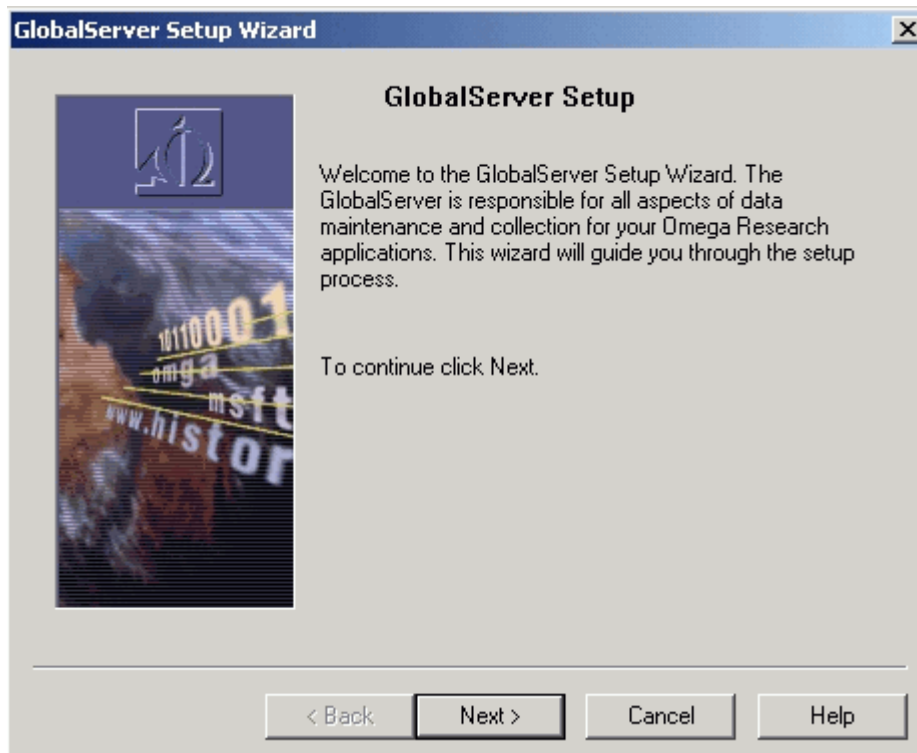


2.2 If you do not want to keep the data or portfolio, **Click No** to continue...



2.3 **Click Yes** to permanently delete tickers and price history in the portfolio...

How to install Adapta 2000i for Bloomberg

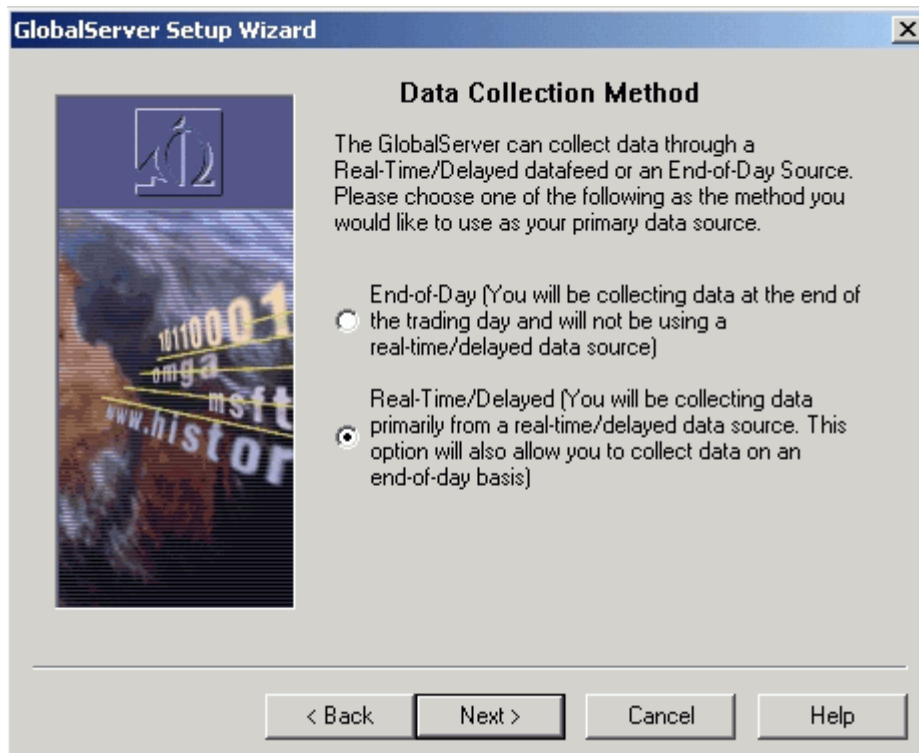


2.4 **Click Next** to continue...

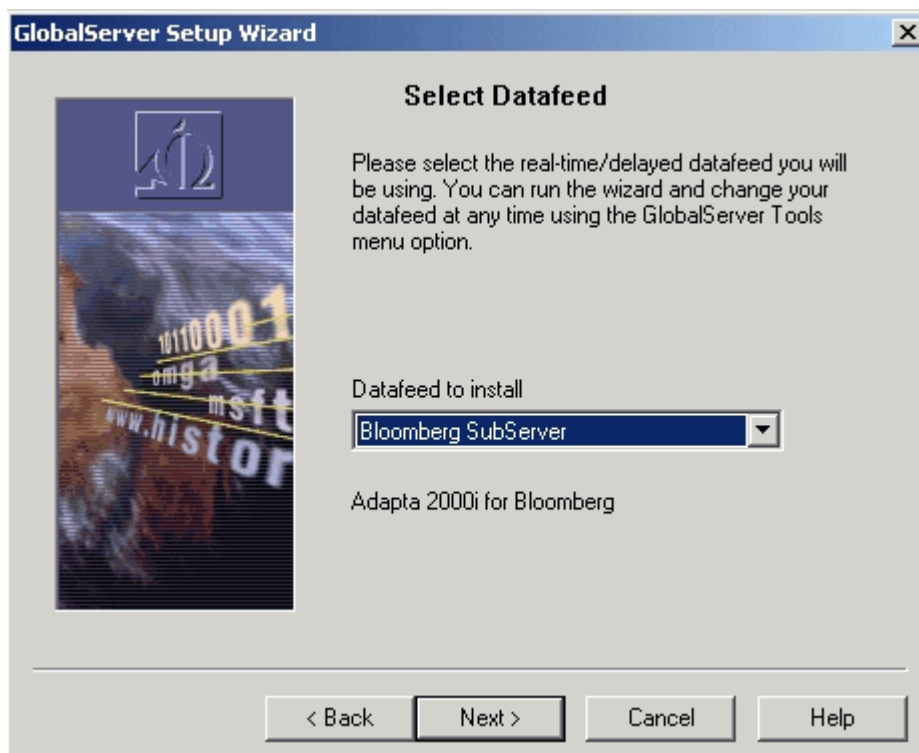


2.5 This information does not concern your service. **Click Next** to continue...

How to install Adapta 2000i for Bloomberg



2.6 Select **Real-Time/Delayed**. Click **Next** to continue...

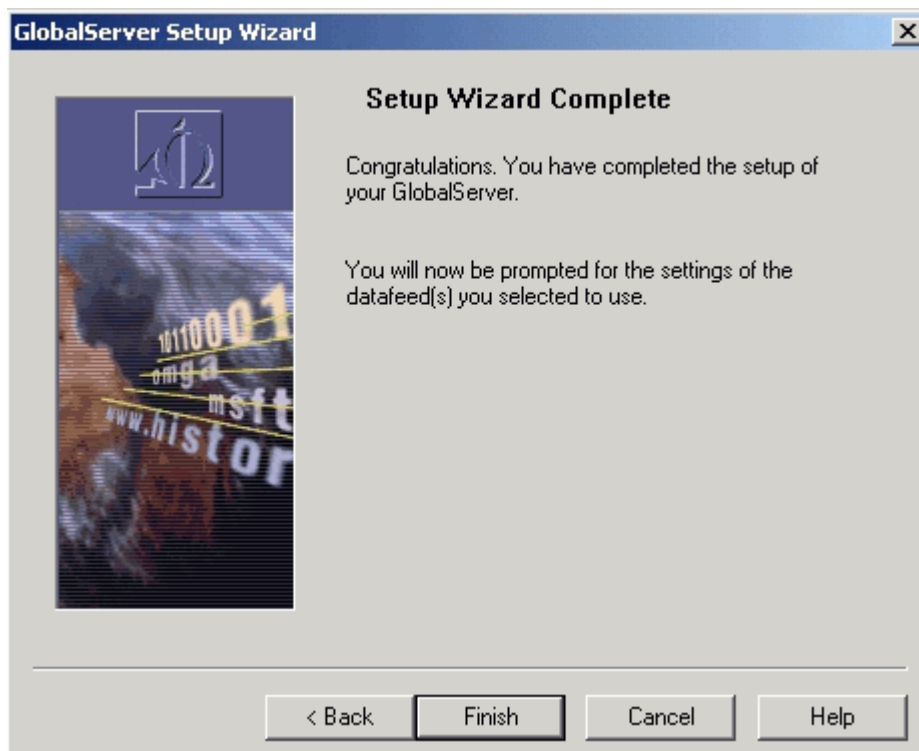


2.7 You must install the **Bloomberg SubServer** for Adapta 2000i. Click **Next** to continue...

How to install Adapta 2000i for Bloomberg

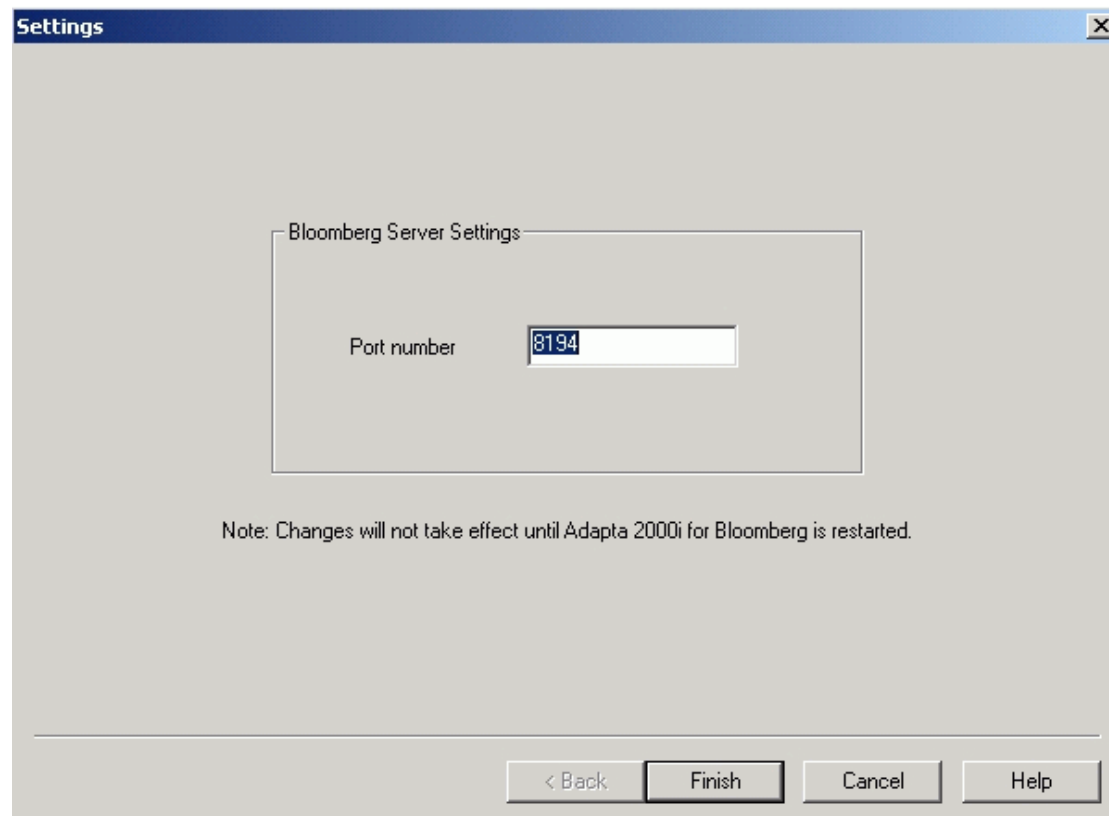


2.8 This information does not concern your service. **Select No** and **Click Next** to continue...



2.9 The Setup Wizard is complete. **Click Finish** to continue...

How to install Adapta 2000i for Bloomberg



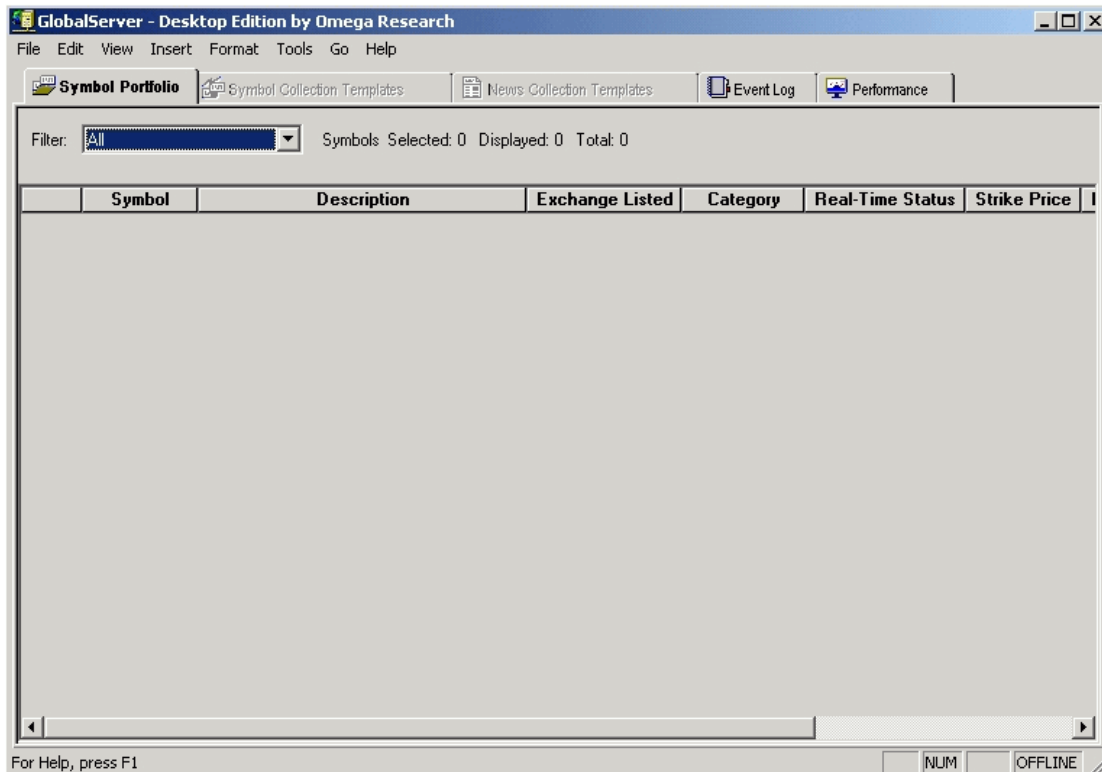
2.10 This message confirms that Adapta 2000i has located and is communicating with the BBComm API component of Bloomberg. **Click Finish** to continue...

NOTE: **If you do not see the above window** check that BBComm is installed as a component of your Bloomberg terminal. Adapta 2000i will not function without BBComm present.

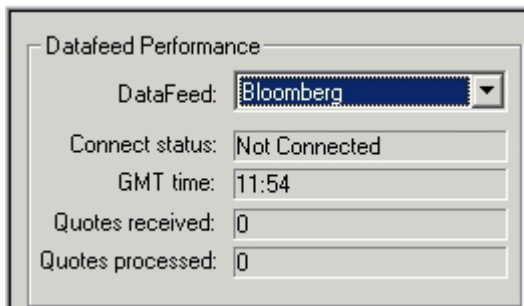


2.11 GlobalServer will launch automatically. Select **Start Offline**.

How to install Adapta 2000i for Bloomberg

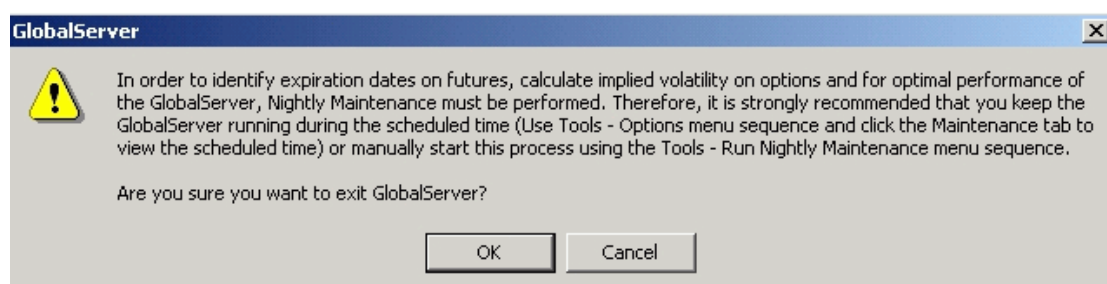


When you are returned to the GlobalServer Symbol Portfolio, it is empty. Click on the **Performance** tab.



Check that **Datafeed Performance** reads as above. **Datafeed:** Bloomberg. **Connect Status:** Not Connected. **GMT time:** correct GMT time.

2.12 Congratulations! Adapta 2000i installation and GlobalServer **SetUp** is complete. **Exit** Global Server...



Click OK to Exit completely. You are returned to the desktop.

Now go to our website (<http://www.tradersworlduk.net/bbgsupport>) and follow our “Getting Started...” instructions in order to learn how to populate GlobalServer with Bloomberg historical price data.