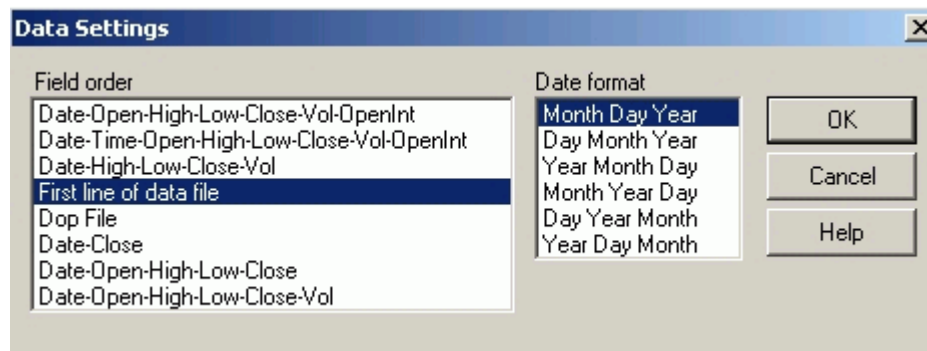


Charting a CSV or Ascii database file in TradeStation 2000i



Firstly, the user should understand that the “Header” information within the CSV or Ascii file must conform to acceptable “field order” formats for TradeStation. These are as shown below (all formats accepted):



TIP: Comprehensive assistance is available in TradeStation Help – **Help/Contents, Index, Answer Wizard...** Select **Search** then type **CSV** into cell 1. Click on **Understanding Ascii files** in Choose topic to display.

CSV and Ascii file format examples

The example below shows the correct way to set-up the header information in a **CSV database file**. Please note that Date, Open, High, Low, and Close are placed within inverted commas “”. The date format here is Day-Month-Year.

	A	B	C	D	E	F
1	"Date"	"Open"	"High"	"Low"	"Close"	
2	04/01/2000	6930.2	6930.2	6662.9	6665.9	
3	05/01/2000	6665.9	6665.9	6500.4	6535.9	
4	06/01/2000	6535.9	6547.3	6424.4	6447.2	
5	07/01/2000	6447.2	6532.4	6438.8	6504.8	
6	10/01/2000	6504.8	6634.2	6504.8	6607.7	
7	11/01/2000	6607.7	6638.1	6510.8	6518.9	
8	12/01/2000	6518.9	6532.8	6470.3	6532.8	
9	13/01/2000	6532.8	6596.5	6509.4	6531.5	

The example below shows the correct way to set-up the header information in a **Ascii database file**. Please note that Date, Time, O, H, L, C, V, and OI are placed within inverted commas “”. The date format here is Month-Day-Year.

```

UKX INDEX.txt - Notepad
File Edit Format Help
|"Date", "Time", "O", "H", "L", "C", "V", "OI"
01/04/2000,1630,6930.20,6930.20,6662.90,6665.90,628669888,0
01/05/2000,1630,6665.90,6665.90,6500.40,6535.90,660537536,0
01/06/2000,1630,6535.90,6547.30,6424.40,6447.20,778496320,0
01/07/2000,1630,6447.20,6532.40,6438.80,6504.80,881089472,0
01/10/2000,1630,6504.80,6634.20,6504.80,6607.70,731403008,0
01/11/2000,1630,6607.70,6638.10,6510.80,6518.90,847953600,0
01/12/2000,1630,6518.90,6532.80,6470.30,6532.80,774500672,0
    
```

TIP: If your CSV or Ascii database normally only holds a single value (e.g., close), simply copy this value into the Open, High, and Low columns. Volume and Open Interest can be set to “0” if necessary.

Charting a CSV or Ascii database file in TradeStation 2000i



To plot a chart from the CSV or Ascii data file, go to File/New/TradeStation Chart, and click OK. The **Create Chart Window** dialog appears.

Create Chart Window

Show: GlobalServer 3rd Party Directory
 GlobalServer Symbol List 3rd Party Directory Symbol List

Bloomberg

Symbol: (Automatically lists partial matches)

Sort: Symbol Description

This dialog will normally default to the most recent database you used, for example **Show:** GlobalServer if you have been plotting charts from data in the GlobalServer. Your CSV or Ascii data file is found in a 3rd Party Directory, so **click on the 3rd Party Directory** radio button. The **Create Chart Window** dialog will change, as below:

Create Chart Window

Show: GlobalServer 3rd Party Directory
 GlobalServer Symbol List 3rd Party Directory Symbol List

Ascii:C:\Documents and Settings\Administrator\Desktop\Downloads\De...

Symbol:

Sort: Symbol Description

Edit Dir... New Dir... Delete Dir

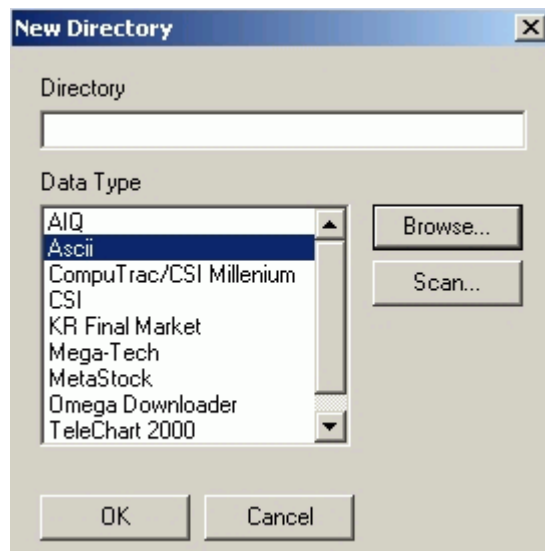
Analysis Template: (None)

Plot Options: Prompt for format

Plot Cancel Help

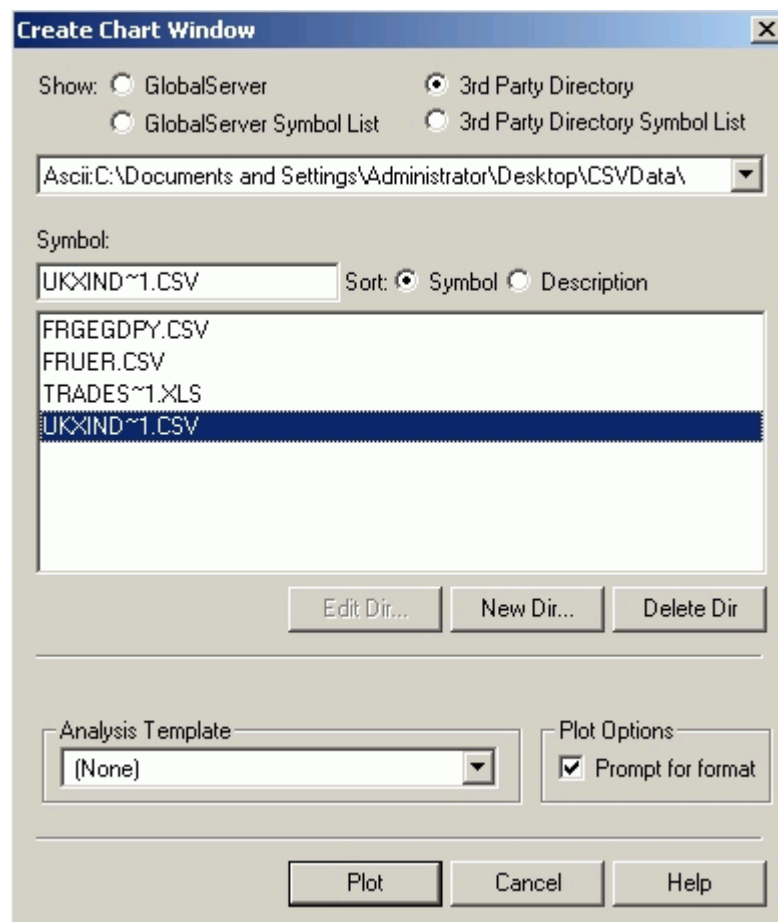
Click on **New Dir...** to access the directory location of your CSV or Ascii file/s.

Charting a CSV or Ascii database file in TradeStation 2000i



Select **Ascii** as the **Data Type**, then click on **Browse...** to locate the CSVdata (or AsciiData) folder.

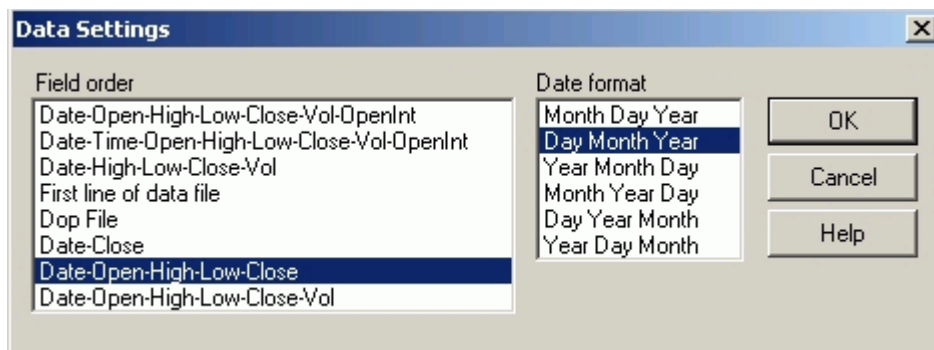
When you have located the CSVdata (or AsciiData) folder in the **Browse for Folder** window, **click to select it**, then **click OK**. You will be returned to the **New Directory** dialog. You will see the path to the CSVdata (or AsciiData) folder in **Directory**. **Click OK**. You are returned to the **Create Chart Window** dialog, as shown below.



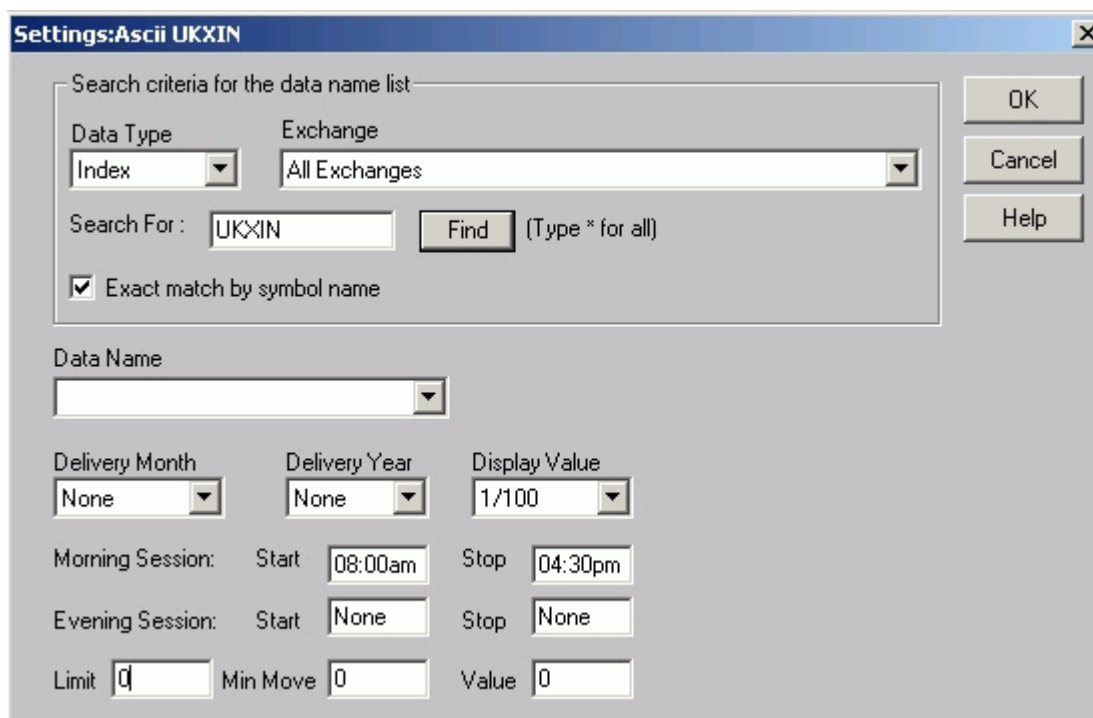
Charting a CSV or Ascii database file in TradeStation 2000i



Select the CSV or Ascii file from the list and **click Plot**. This will open the **Data Settings** window where you must select the appropriate **Field Order** and **Date Format** of the CSV or Ascii file.



In our CSV example, use **Date-Open-High-Low-Close** and **Day-Month-Year**. Click **OK**. This opens the **Settings:Ascii** window. (our Ascii example would require that you select, Date-Time-Open-High-Low-Close-Vol-OpenInt and Month-Day-Year).



In **Settings:Ascii** window you can set the category of **Data Type** (Index, Stock etc.), select the **Display Value** for price scale, Enter the **Session Start and End** times (using **AM** and **PM** times – NOT 24hr), and set the **Minimum Movement** and point **Value** (important for strategy back-testing). **Click OK** to continue.

The **Format Symbol** window opens allowing you to choose the start and end dates of the price data you want to plot, as well as the compression Daily – Weekly etc., (see below)

Charting a CSV or Ascii database file in TradeStation 2000i



Format Symbol

Settings | Style | Scaling | Properties

Date range
Available: 01/04/2000-04/08/2003
First Date: 01/04/2000 Universe...
Last Date: 04/08/2003

Compression
 Tick Bar 1 Ticks
 Intra-day 5 Min
 Daily
 Weekly
 Monthly
 Point & Figure 1 x 3

Use compression settings as symbol default

OK Cancel Help

Click **OK** to plot the chart, as below.



TIP: To change settings for this chart, go to **Format/Symbol**, and click on the **Settings** tab. Click on **“Universe”**. Apply any changes in the **Settings:Ascii** window.